

The Mobility Agenda

www.inclusionist.org/mobility

Lessons from the UK and US: Developing Goals for Economic Mobility, Social Inclusion, and Employment

October 25, 2007

10-11:30AM

Inclusion

PETER HAIN: *Secretary of State for Work and Pensions, UK*



Peter Hain is the Member of Parliament for Neath. He was appointed Secretary of State for Work and Pensions and Secretary of State for Wales in June 2007, as part of Gordon Brown's first Cabinet. He was Secretary of State for Northern Ireland from 2005 to June 2007 and has been Secretary of State for Wales since 2002.

Previously, he was made Minister of State at the Department of Trade and Industry in 2001 and became Minister for Europe at the Foreign and Commonwealth Office (FCO) later that year. Mr Hain was also Minister of State at the FCO from 1999 to 2001, and a junior minister at the former Welsh Office from 1997 to 1999. He is a former head of research with the Union of Communication Workers and a former chairman of the Tribune newspaper.

Born in Nairobi and brought up in South Africa, Mr Hain was educated at Pretoria Boys High School, University of London, and Sussex University. He achieved international prominence as a result of his work in the anti-apartheid movement.

MATTHEW NISBET: *Assistant Professor, American University*



Matthew C. Nisbet, Ph.D. is assistant professor in the School of Communication at American University. As a social scientist he examines the role of strategic communication in policy debates, tracking the interactions between experts, journalists, and various publics. In this research, Nisbet studies how news coverage reflects and shapes policy, how strategists try to mold public opinion, and how citizens make sense of complex issues.

The author of numerous research articles, his work appears across a number of leading peer-reviewed journals and popular publications. At American University, Nisbet teaches courses in political communication, communication and society, graduate research, and communication theory. He was previously on the faculty at The Ohio State University and he has also taught at Cornell University and Dresden Technical University, Germany.

Nisbet is a frequently invited lecturer at conferences and meetings across the U.S. and Canada, and he is often called upon for his expert analysis by major news organizations. He holds a Ph.D. and M.S. from Cornell University in Communication and an A.B. in Government from Dartmouth College.

BETH SHULMAN: Co-Chair, *The Fairness Initiative on Low-Wage Work*



Beth Shulman is the author of *The Betrayal of Work: How Low-Wage Jobs Fail 30 Million Americans* (September 2003, The New Press), a revealing examination of low wage work in the United States.

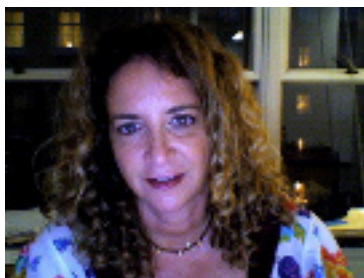
Shulman currently co-chairs the Fairness Initiative on Low-Wage Work, a project to increase public awareness about the problems of low-wage work and the need for policy change to respond to this issue, and works with the Russell Sage Foundation's Social Inequality and Future of Work Projects. She speaks throughout the country and lectures at conferences and universities on low-wage work, inequality, workplace issues, business-labor relations, work/family conflicts, employment discrimination, and the role of unions in our society.

Previously, she was a Vice President of the United Food and Commercial Workers International Union. She was an adjunct professor at the School of Business and Public Management at The George Washington University. She began her career as a civil rights lawyer in Memphis, Tennessee focusing on employment discrimination and school desegregation cases.

Shulman served on President Clinton's Advisory Council for School to Work Opportunities. She was a Trustee of the Board of the National Planning Association, a member of the Domestic Strategy Group of the Aspen Institute and an Executive Board member of the Industrial Relations Research Association. She currently serves on the Executive Boards of the National Employment Law Project, the Financial Markets Center, American Rights at Work, Wider Opportunities for Women, and the Perry School Community Services Center. Shulman has appeared on numerous T.V. and radio programs including Oprah, The News Hour, PBS Now with Bill Moyers, and CNN's Lou Dobbs Tonight.

A native of Los Angeles, Shulman received an undergraduate degree in philosophy from the University of California at Los Angeles and a law degree from Georgetown Law Center.

MARGY WALLER: Director, *The Mobility Agenda*, Co-Founder, *Inclusion*



Margy Waller is a co-founder of *Inclusion* and Director of The Mobility Agenda. Previously she was Visiting Fellow at the Brookings Institution, with a joint appointment in the Economic Studies and Metropolitan Policy programs. Prior to Brookings, she was Senior Advisor on domestic policy in the Clinton-Gore White House.

Before joining the Administration, Margy was Senior Fellow for Social Policy and Director of the Working Families Project at the Progressive Policy Institute. She also served as Director of Public Policy at United Way of America, Director of Policy Development at Public/Private Ventures in Philadelphia, and as a Congressional Fellow in the office of U.S. Representative Eric Fingerhut (D-OH).

Margy has written extensively on low-wage work and transportation issues, with a particular focus on access to private vehicle transportation options. She received her B.S. in communication studies at Northwestern University and a law degree from The Ohio State University.